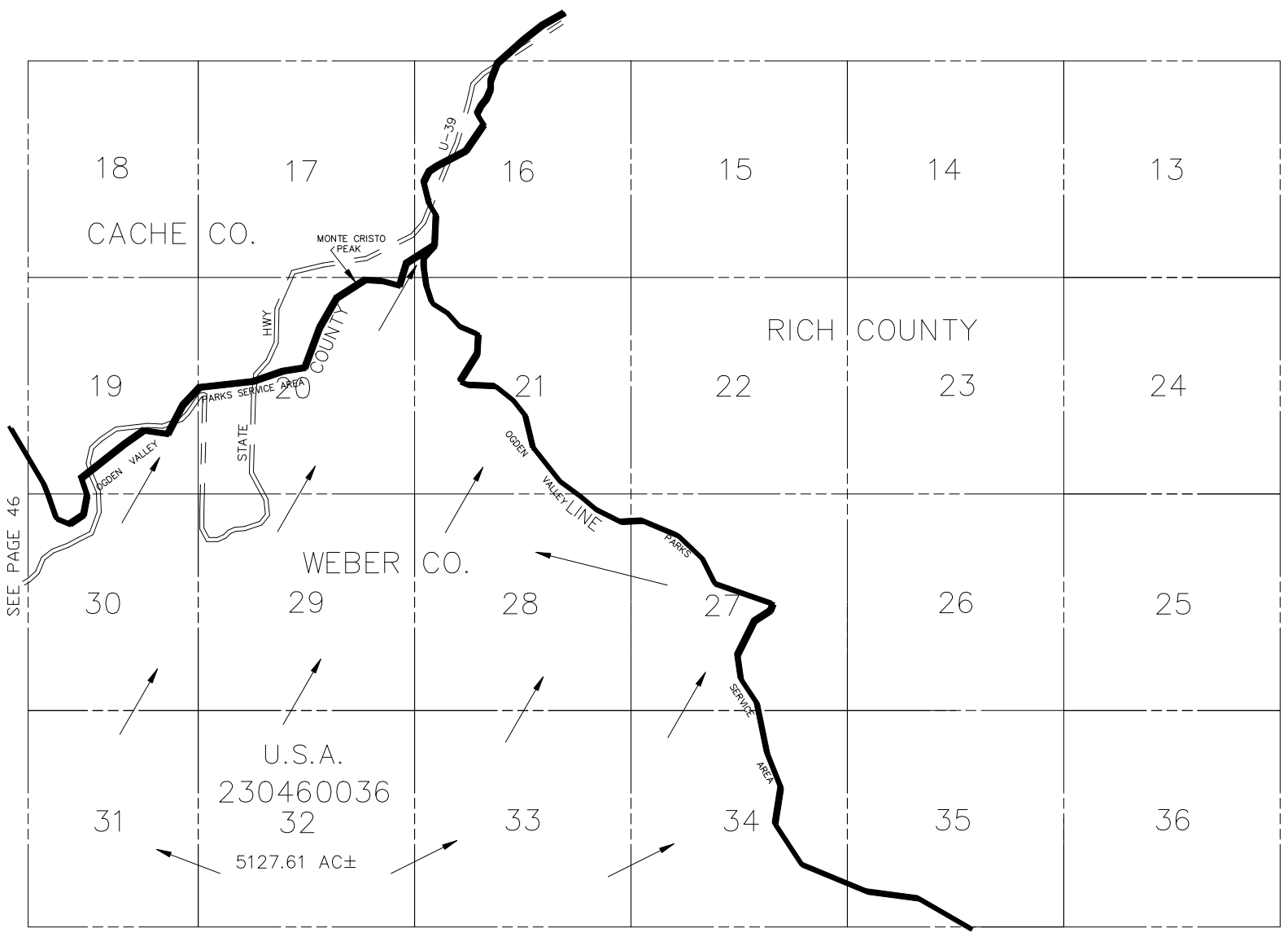


A PART OF
T.8N., R.4E., S.L.B. & M.

IN WEBER COUNTY
SCALE 1" = 2000'

TAXING UNIT: 520



SEE PAGE 46

SEE PAGE 42

NOTE: THIS PLAT IS MERELY FOR PUBLIC INFORMATION.
NO RECORD FOR THE LAND HAS BEEN MADE IN THE
OFFICE OF WEBER COUNTY RECORDER. ALL SECTIONS
IN T.8N., R.4E., ARE PUBLIC DOMAIN. SEE PROCLAMATION
#1176 ON FILE WITH U.S. FOREST SERVICE.

NOTE: WEBER/CACHE ASSESSMENT LINE
CHANGED TO COUNTY LINE - 1995